

# HENRY AIRTOOLS

AMERICAN MADE INDUSTRIAL  
TOOLS

## MODELS 40AGHLSD

### General Safety and Maintenance Manual



Features: A built in heavy duty Erickson Style collet with interchangeable collet inserts.



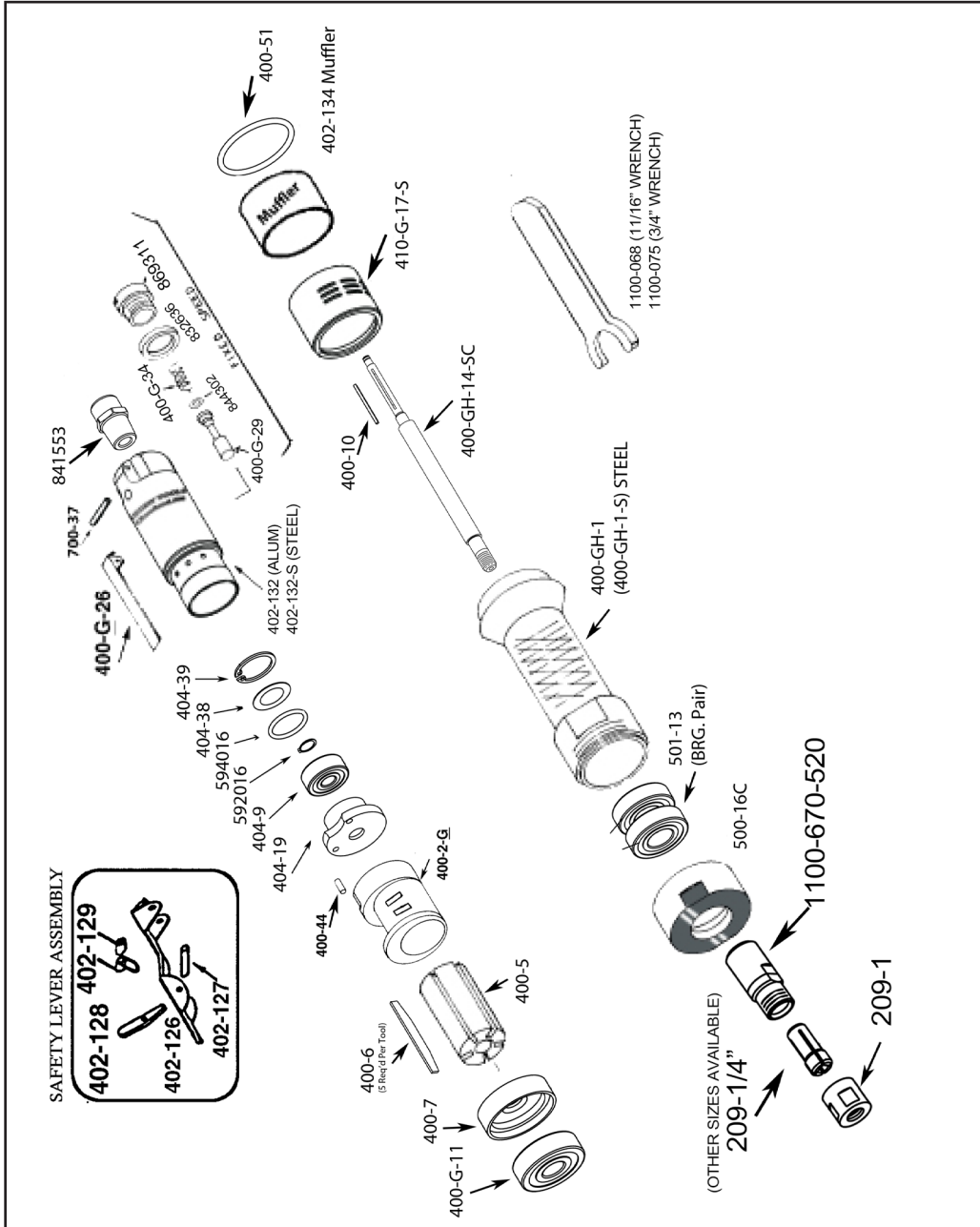
Model Number	Exhaust Direction	Spindle Type	Throttle Type	Speed	Power Output	Case Material	Weight		Length	Diameter	Air Consumption
							Aluminum	Steel			
40AGHLSD	Side	Erickson Collet	(L) Lever or (K) Safety Lever	15000-22000 R.P.M. (18000PM is standard)	0.9 H.P .675 W	(S) Steel or Aluminum	2.8 Lb. (1.3 Kg)	4.1 Lb. (1.9 Kg)	13.1 Inch (334 mm)	1.500"/ 38.1 mm	25 cfm (11.8 L/S)

**THE HENRY TOOL CO., MANUFACTURED BY HENRY TOOLS**  
**498 SO. BELVOIR BLVD., SOUTH EUCLID, OH 44121 U.S.A.**  
**PH: (216) 291-1011 OR (800) 826-5257 • FAX: (216) 291-5949 OR (800) 303-2800**  
**EMAIL: DAVIDH@MSN.COM • WEBSITE: WWW.HENRYTOOLS.COM**

# MODELS 40AGHLSD



Model 40AGHLSD Extended Die Grinder featuring an Erickson Style Collet.



HENRY TOOLS, INC. Ph: (216) 291-1011 or (800) 826-5257

# MODELS 40AGHLSD



Model 40AGHLSD Extended Die Grinder featuring an Erickson Style Collet.

PART NO.	DESCRIPTION
1100-670-520	Erickson Collet (40AGHLSD Model Tool Collet)
594016	O-Ring
209-1	Collet Nut
209-1/4"	1/4" Collet Insert
209-3/8"	3/8" Collet Insert
209-1/8"	1/8" Collet Insert
404-38	Wafer Bearing Cover
400-10	Key
400-2	Cylinder 15000RPM
841553	Screen Bushing
400-2-G	Cylinder(18000RPM STANDARD) (with Pin installed)
404-19	Rear End Plate
404-39	Lock Ring (844941)
400-44	Pin
400-5	Rotor
400-51	O-Ring
400-6	Blade (5 are req'd)
400-7	Front Thrust
404-9	Rear Bearing (Sealed) (590004)
402-26	Safety lock Lever Assembly COMPLETE
402-126	Safety Lock Lever (Bare)
402-127	Dowel Pin
402-128	Safety Lever Latch
402-129	Lever Spring
402-132	Case (Alum.)
402-132-S	Case (Steel)
400-G-11	Bearing(2 Req'd)
410-G-17-S	Steel Exhaust Sleeve
400-G-26	Valve Lever
400-G-29	Valve (412451) WITH O-Ring
400-G-34	Spring
400-GH-1	Extended Case (Alum.) (412475)
400-GH-1-S	Extended Case (STEEL)

PART NO.	DESCRIPTION
400-GH-14-SC	Spindle (40AGHLSD Model tool) for use with Erickson Type Collet
402-134	Muffler Screen
500-16C	Front Bearing CAP
500-21	Seal(Optional)
500-G-42-A	Flange Nut, 1/2-20 Thread
501-13	Bearings (412891)(PAIR)
700-37	Lever Pin
844302	O-Ring
832636	T.V. Cap Gasket
869311	Throttle Valve Cap
<b>ACCESSORIES</b>	
1100-068	Wrench 11/16"
1100-075	Wrench 3/4"
<b>REPAIR KITS</b>	
510244	Repair Kit (All Bearings, Rotor-Blades and snap rings.)

HENRY TOOLS, INC. Ph: (216) 291-1011 or (800) 826-5257